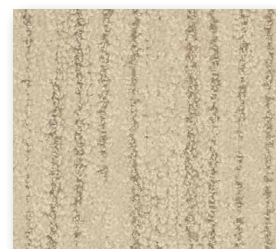


| | | | |
|---------------------------------|---------------------------------|---------------------------------|-------------------|
| CONSTRUCTION | Tufting 1/10" struct.loop pile | PERMANENTLY ANTISTATIC | ISO 6356 |
| STRUCTURE | Tufté 1/10" bouclé structuré | ANTISTATIQUE PERMANENT | < 2 kV |
| STRUKTUR | Getuftet 1/10" Strukturschlinge | PERMANENT ANTISTATISCH | |
| STRUCTUUR | Getuft 1/10" structuurlus | PERMANENT ANTISTATISCH | |
| PILE MATERIAL | 100% PA 6 IMPREL® | IMPACT NOISE RATING | ISO 140-8 |
| COMPOSITION DU VELOURS | | ISOLATION PHONIQUE | 26 dB ΔLw |
| POLMATERIAL | | TRITTSCHALLVERBESSERUNG | |
| POOLMATERIAAL | | GELUIDSISOLATIE | |
| PRIMARY BACKING | Woven PP | SOUND ABSORPTION | ISO 354 |
| SUPPORT | PP tissé | ABSORPTION PHONIQUE | 0.20 αw |
| TRÄGERMATERIAL | PP Bändchen | SCHALLABSORPTIONSGRAD | |
| TUFTDOEK | PP geweven | GELUIDSABSORPTIE | |
| SECONDARY BACKING | Action Back | THERMAL RESISTANCE | ISO 8302 |
| DOSSIER | | RÉSISTANCE THERMIQUE | 0.09 m² K/W |
| RÜCKEN | | WÄRMEDURCHLASSWIDERSTAND | |
| TAPIJTRUG | | WARMTEDOORLAATWEERSTAND | |
| PILE WEIGHT | Ca. 1.100 gr/m² | FASTNESS TO LIGHT | ISO 105-B02 |
| POIDS DU VELOURS | | SOLIDITÉ A LA LUMIÈRE | ≥ 5-6 |
| POLEINSATZGEWICHT | | LICHTECHTHEIT | |
| POOLGEWICHT | | LICHTECHTHEID | |
| TOTAL WEIGHT | Ca. 2.060 gr/m² | COLOUR FASTNESS TO WATER | EN ISO 105-E01 |
| POIDS TOTAL | | SOLIDITÉ À L'EAU | ≥ 4-5 |
| GESAMTGEWICHT | | WASSERECHEITHEIT | |
| TOTAAL GEWICHT | | WATERECHEITHEID | |
| PILE HEIGHT | Ca. 5 mm | RUBBING FASTNESS | EN ISO 105-X12 |
| EPAISSEUR DU VELOURS | | SOLIDITÉ AU FROTTEMENT | ≥ 4 |
| POLHÖHE | | REIBECHTHEIT | |
| POOLHOOGTE | | WRIJFECHTHEID | |
| TOTAL HEIGHT | Ca. 8 mm | FIRE RESISTANCE | EN 13501-1 |
| EPAISSEUR TOTAL | | COMPOTEMENT AU FEU | Cfl-s1 (if glued) |
| GESAMTHÖHE | | BRENNVERHALTEN | |
| TOTALE DIKTE | | BRANDGEDRAG | |
| TUFT DENSITY | Ca. 221 000/m² | NUMBER OF COLOURS | 14 |
| NOMBRES DE POINTS | | NOMBRES DE COULEURS | |
| NOPPENZAHL | | ANZAHL FARBEN | |
| AANTAL PUNTEN | | AANTAL KLEUREN | |
| PILE DENSITY | Ca. 0.125 g/cm³ | WIDTH | EN ISO 3018 |
| DENSITÉ DU VELOURS | | LARGEUR | ca. 400 cm |
| POLROHDICHTHEIT | | BREITE | |
| POOLDICHTHEID | | BREEDTE | |
| CLASSIFICATION | EN 1307 | | |
| CLASSEMENT | 32 - LC4 | | |
| KLASSIFIKATION | | | |
| CLASSIFICATIE | | | |
| CASTOR CHAIR SUITABILITY | EN 985 | | |
| CHAISE À ROULETTES | A: intensive use | | |
| STUHLROLLENEIGNUNG | | | |
| ROLSTOELGESCHIKTHEID | | | |
| STAIR SUITABILITY | EN 1963 | | |
| ESCALIERS | A: intensive use | | |
| TREPPENEIGNUNG | | | |
| TRAPPENGESCHIKTHEID | | | |

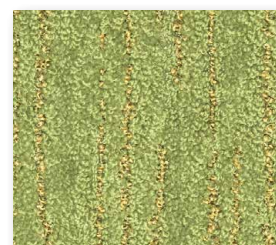




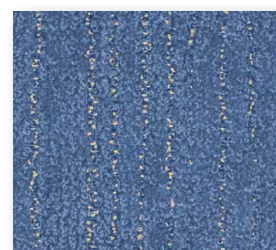
▲ 33



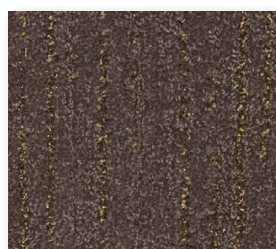
▲ 53



▲ 23



▲ 79



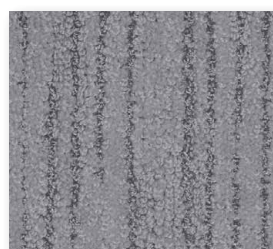
▲ 48



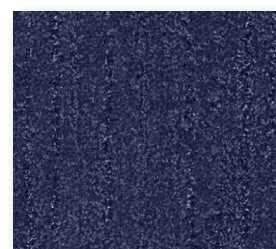
▲ 40



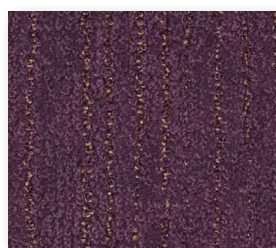
▲ 38



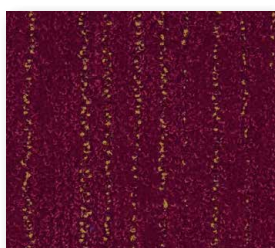
▲ 93



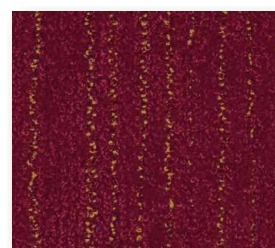
▲ 78



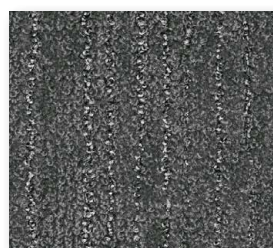
▲ 85



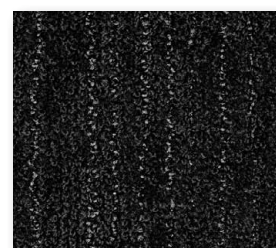
▲ 16



▲ 15



▲ 94



▲ 98