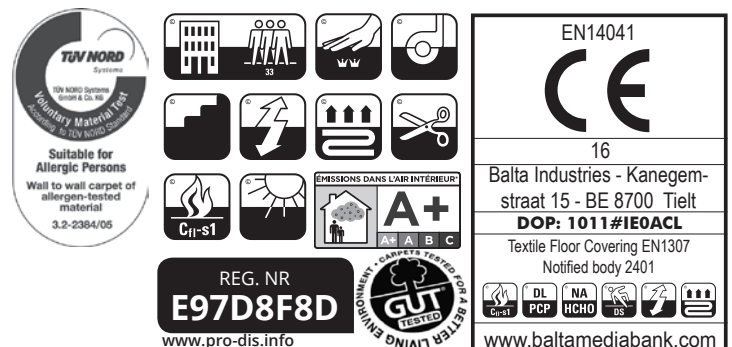
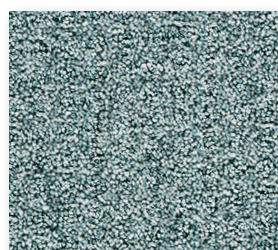
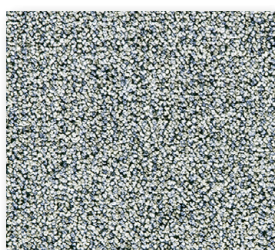


CONSTRUCTION STRUCTURE STRUKTUR STRUCTUUR	Tufting 1/10" loop pile Tufté 1/10" bouclé Getuftet 1/10" Schlinge Getuft 1/10" lussenpool	PERMANENTLY ANTISTATIC ANTISTATIQUE PERMANENT PERMANENT ANTISTATISCH PERMANENT ANTISTATISCH	ISO 6356 < 2 kV
PILE MATERIAL COMPOSITION DU VELOURS POLMATERIAL POOLMATERIAAL	100% PA 6 IMPREL®	IMPACT NOISE RATING ISOLATION PHONIQUE TRITTSCHALLVERBESSERUNG GELUIDSISOLATIE	ISO 140-8 24 dB ΔLw
PRIMARY BACKING SUPPORT TRÄGERMATERIAL TUFTDOEK	Non woven PES PES non tissé PES Vlies Non woven PES	SOUND ABSORPTION ABSORPTION PHONIQUE SCHALLABSORPTIONSGRAD GELUIDSABSORPTIE	ISO 354 0.15 Qw
SECONDARY BACKING DOSSIER RÜCKEN TAPIJTRUG	Action Back	THERMAL RESISTANCE RÉSISTANCE THERMIQUE WÄRMEDURCHLASSWIDERSTAND WARMTEDOORLAATWEERSTAND	ISO 8302 0.08 m² K/W
PILE WEIGHT POIDS DU VELOURS POLEINSATZGEWICHT POOLGEWICHT	Ca. 700 gr/m²	FASTNESS TO LIGHT SOLIDITÉ A LA LUMIÈRE LICHTECHTHEIT LICHTECHTHEID	ISO 105-B02 ≥ 5-6
TOTAL WEIGHT POIDS TOTAL GESAMTGEWICHT TOTAAL GEWICHT	Ca. 1.780 gr/m²	COLOUR FASTNESS TO WATER SOLIDITÉ À L'EAU WASSERECHTHEIT WATERECHTHEID	EN ISO 105-E01 ≥ 4-5
PILE HEIGHT EPAISSEUR DU VELOURS POLHÖHE POOLHOOGTE	Ca. 3,5 mm	RUBBING FASTNESS SOLIDITÉ AU FROTTEMENT REIBECHTHEIT WRIJFECHTHEID	EN ISO 105-X12 ≥ 4
TOTAL HEIGHT EPAISSEUR TOTAL GESAMTHÖHE TOTALE DIKTE	Ca. 6,1 mm	FIRE RESISTANCE COMPOTEMENT AU FEU BRENNVERHALTEN BRANDGEDRAG	EN 13501-1 Cfl-s1
TUFT DENSITY NOMBRES DE POINTS NOPPENZAHL AANTAL PUNTEN	Ca. 234 000/m²	NUMBER OF COLOURS NOMBRES DE COULEURS ANZAHL FARBEN AANTAL KLEUREN	10
PILE DENSITY DENSITÉ DU VELOURS POLROHDICHTE POOLDICHTHEID	Ca. 0.149 g/cm³	WIDTH LARGEUR BREITE BREEDTE	EN ISO 3018 ca. 400 & 500 cm
CLASSIFICATION CLASSEMENT KLASSIFIKATION CLASSIFICATIE	EN 1307 33 - LC2		
CASTOR CHAIR SUITABILITY CHAISE À ROULETTES STUHLROLLENEIGNUNG ROLSTOELGESCHIKTHEID	EN 985 A: intensive use		
STAIR SUITABILITY ESCALIERS TREPPENEIGNUNG TRAPPENGESCHIKTHEID	EN 1963 A: intensive use		

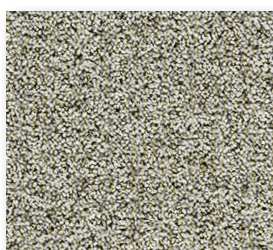




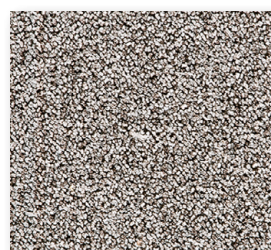
▲ 72



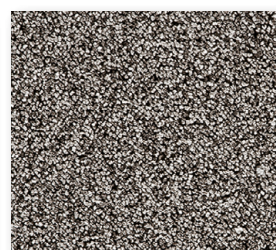
▲ 79



▲ 95



▲ 97



▲ 96



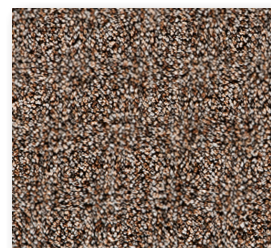
▲ 23



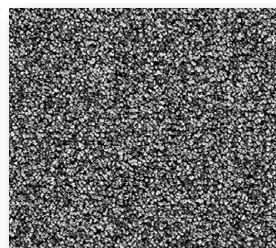
▲ 54



▲ 34



▲ 48



▲ 98