

# forza

## FABRICAGEMETHODE

Naaldvilt

## POOLSAMENSTELLING

100% PP

## RUG

Cres/Contract resine

## POOLGEWICHT

ca. 850 gr/m²

## TOTAAL GEWICHT

ca. 1.100 gr/m²

## TOTALE HOOGTE

ca. 7 mm

## PERMANENT ANTISTATISCH

<1,9 kV

## GELUIDSISOLATIE

ISO 140-8: ca 22 dB delta L

## GELUIDSABSORPTIE

ISO 354: ca 0.20 alpha w

## WARMTEDOORLAATBAARHEID

ca. 0,11 m² K/W

## LICHTECHTHEID

5-6

## WATERECHTHEID

4-5

## BRANDKLASSE

Brandklassen C<sub>fl</sub>-s1  
indien verkleefd

## MÉTHODE DE FABRICATION

Aiguilleté

## COMPOSITION DU VELOURS

100% PP

## DOSSIER

Cres/Contract resine

## POIDS DU VELOURS

ca. 850 gr/m²

## POIDS TOTAL

ca. 1.100 gr/m²

## HAUTEUR TOTALE

ca. 7 mm

## ANTISTATIQUE PERMANENT

<1,9 kV

## ISOLATION AUX BRUITS D'IMPACT

ISO 140-8: ca 22 dB delta L

## ABSORPTION PHONIQUE

ISO 354: ca 0.20 alpha w

## RÉSISTANCE THERMIQUE

ca. 0,11 m² K/W

## RÉSISTANCE À LA LUMIÈRE

5-6

## RÉSISTANCE À L'EAU

4-5

## CLASSEMENT FEU

Classement feu C<sub>fl</sub>-s1  
en pose collée

## HERSTELLUNGSVERFAHREN

Nadelvlies

## POLMATERIAL

100% PP

## RÜCKENAUSRÜSTUNG

Cres/Contract resine

## POLGEWICHT

ca. 850 gr/m²

## GESAMTGEWICHT

ca. 1.100 gr/m²

## GESAMTHÖHE

ca. 7 mm

## PERMANENT ANTISTATISCH

<1,9 kV

## TRITTSCHALLDÄMMUNG

ISO 140-8: ca 22 dB delta L

## SCHALLABSORPTIONSGRAD

ISO 354: ca 0.20 alpha w

## WÄRMEDURCHLASSWIDERSTAND

ca. 0,11 m² K/W

## LICHTECHTHEIT

5-6

## WASSERECHTHEIT

4-5

## BRANDVERHALTENSKLASSE

Baustoffkl. C<sub>fl</sub>-s1  
bei Verklebung

## MANUFACTURING PROCESS

Needle felt

## PILE CONTENT

100% PP

## SECONDARY BACKING

Cres/Contract resine

## PILE WEIGHT

ca. 850 gr/m²

## TOTAL WEIGHT

ca. 1.100 gr/m²

## TOTAL HEIGHT

ca. 7 mm

## PERMANENTLY ANTISTATIC

<1,9 kV

## SOUND INSULATION

ISO 140-8: ca 22 dB delta L

## SOUND ABSORPTION

ISO 354: ca 0.20 alpha w

## THERMAL RESISTANCE

ca. 0,11 m² K/W

## LIGHT FASTNESS

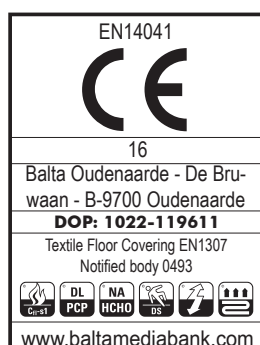
5-6

## WATER RESISTANCE

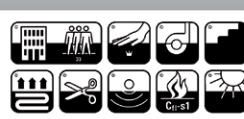
4-5

## FIRE CLASS

Fire resistance C<sub>fl</sub>-s1  
if glued



Colours and widths								
Forza	568	573	826	900	929	963	974	990
ca 2 m	■	■	■	■	■	■	■	■
ca 4 m	■	■	■	■	■	■	■	■



# forza



▲ 826



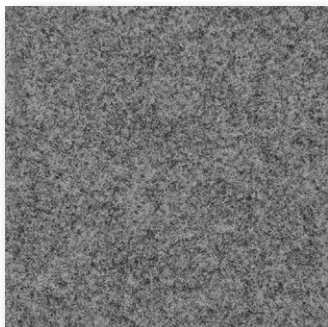
▲ 929



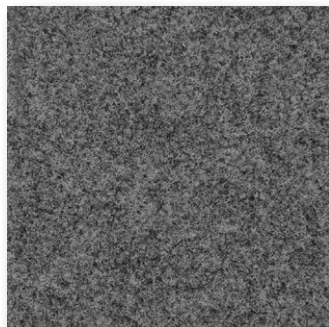
▲ 568



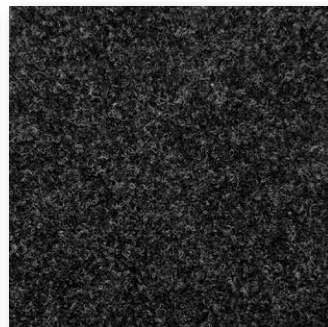
▲ 573



▲ 900



▲ 963



▲ 990



▲ 974