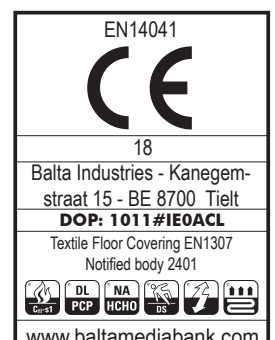
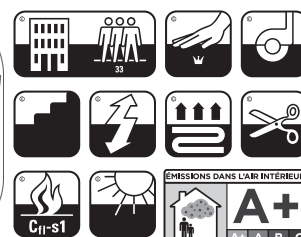
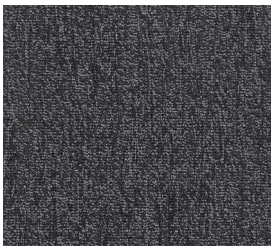
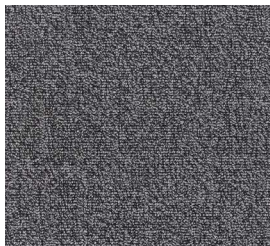


CONSTRUCTION STRUCTURE STRUKTUR STRUCTUUR	Tufting 1/10" textured loop Tufté 1/10" bouclé Getuftet 1/10" Schlinge Getuft 1/10" lussenpool	PERMANENTLY ANTISTATIC ANTISTATIC PERMANENT PERMANENT ANTISTATISCH PERMANENT ANTISTATISCH	ISO 6356 < 2 kV
PILE MATERIAL COMPOSITION DU VELOURS POLMATERIAL POOLMATERIAAL	100% PA solution dyed	IMPACT NOISE RATING ISOLATION PHONIQUE TRITTSCHALLVERBESSERUNG GELUIDSISOLATIE	ISO 140-8 24 dB ΔLw
PRIMARY BACKING SUPPORT TRÄGERMATERIAL TUFTDOEK	Non woven PES Non tissé PES Vlies, PES Vilt, PES	SOUND ABSORPTION ABSORPTION PHONIQUE SCHALLABSORPTIONSGRAD GELUIDSABSORPTIE	ISO 354 0.15 αw
SECONDARY BACKING DOSSIER RÜCKEN TAPIJTRUG	Action Back	THERMAL RESISTANCE RÉSISTANCE THERMIQUE WÄRMEDURCHLASSWIDERSTAND WARMTEDOORLAATWEERSTAND	ISO 8302 0.073 m² K/W
PILE WEIGHT POIDS DU VELOURS POLEINSATZGEWICHT POOLGEWICHT	Ca. 590 gr/m²	FASTNESS TO LIGHT SOLIDITÉ A LA LUMIÈRE LICHTECHTHEIT LICHTECHTHEID	ISO 105-B02 ≥ 7
TOTAL WEIGHT POIDS TOTAL GESAMTGEWICHT TOTAAL GEWICHT	Ca. 1.950 gr/m²	COLOUR FASTNESS TO WATER SOLIDITÉ À L'EAU WASSERECHTHEIT WATERECHTHEID	EN ISO 105-E01 ≥ 4-5
PILE HEIGHT EPAISSEUR DU VELOURS POLHÖHE POOLHOOGTE	Ca. 2,9 mm	RUBBING FASTNESS SOLIDITÉ AU FROTTEMENT REIBECHTHEIT WRIJFECHTHEID	EN ISO 105-X12 ≥ 4
TOTAL HEIGHT EPAISSEUR TOTALE GESAMTHÖHE TOTALE DIKTE	Ca. 5,8 mm	FIRE RESISTANCE COMPORTEMENT AU FEU BRENNVERHALTEN BRANDGEDRAG	EN 13501-1 Cfl-s1
TUFT DENSITY NOMBRES DE POINTS NOPPENZAHL AANTAL PUNTEN	Ca. 125 000/m²	NUMBER OF COLOURS NOMBRES DE COULEURS ANZAHL FARBEN AANTAL KLEUREN	10
PILE DENSITY DENSITÉ DU VELOURS POLROHDICHTHEIT POOLDICHTHEID	Ca. 0.109 g/cm³	WIDTH LARGEUR BREITE BREEDTE	EN ISO 3018 ca. 400 cm
CLASSIFICATION CLASSEMENT KLASSIFIKATION CLASSIFICATIE	EN 1307 33 - LC1		
CASTOR CHAIR SUITABILITY CHAISE À ROULETTES STUHLROLLENEIGNUNG ROLSTOELGESCHIKTHEID	EN 985 A: intensive use		
STAIR SUITABILITY ESCALIERS TREPPENEIGNUNG TRAPPENGESCHIKTHEID	EN 1963 A: intensive use		

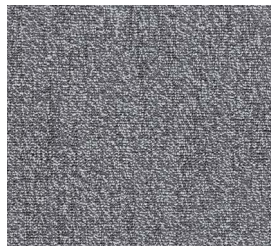




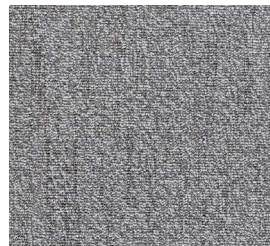
▲ 98



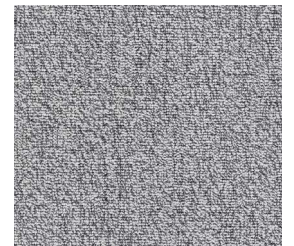
▲ 96



▲ 97



▲ 93



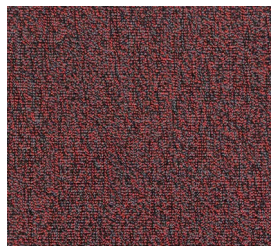
▲ 90



▲ 78



▲ 72



▲ 12



▲ 47



▲ 32