

Adapted reclining mirror to be fixed to the wall. Stainless steel. Satin finish.

#### Description

- Mirror with adjustable tilt angle, specially designed to be placed in adapted toilets.
- 10 mm satin finish stainless steel frame.
- Durability and corrosion resistance.

#### Suggested text for prescription

NOFER mirror, with adjustable tilt angle and satin finish stainless steel frame.  
Placement with reclining wall fixing plate. Fixing screws included.  
Dimensions: 700 height x 500 width x depth 75 (mm).

#### Available

Also available in gloss finish (NOFER 08023.B) and white finish (NOFER 08023.W).

#### Installation

It is recommended to install between 1000 - 1200 mm from the finished floor to the lower mirrored end.

#### Fixing

Wall mounting by reclining plate. Fixing screws included.

#### Technical characteristics

**Frame material:** AISI 304 stainless steel

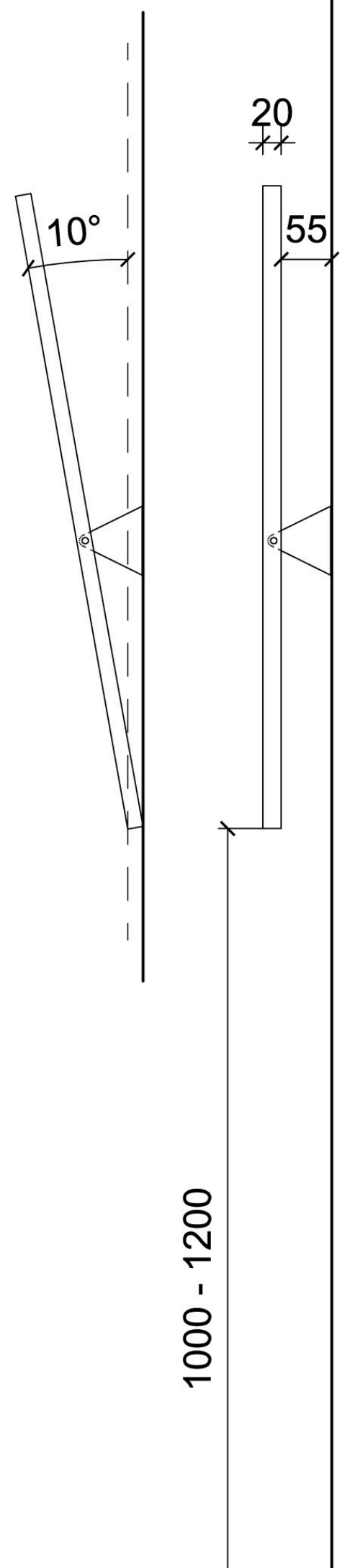
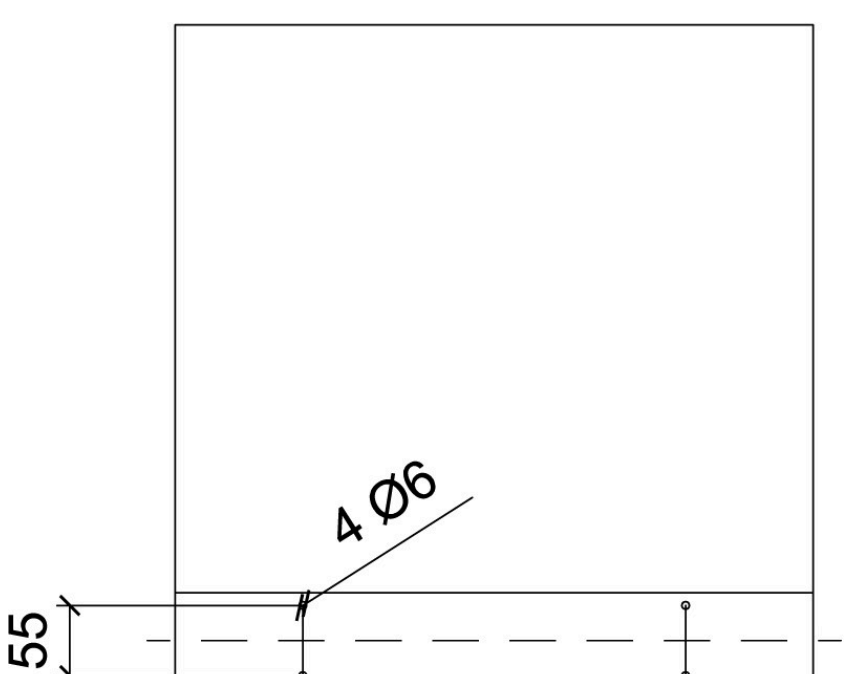
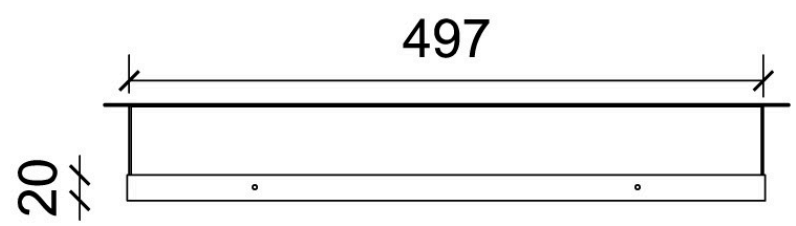
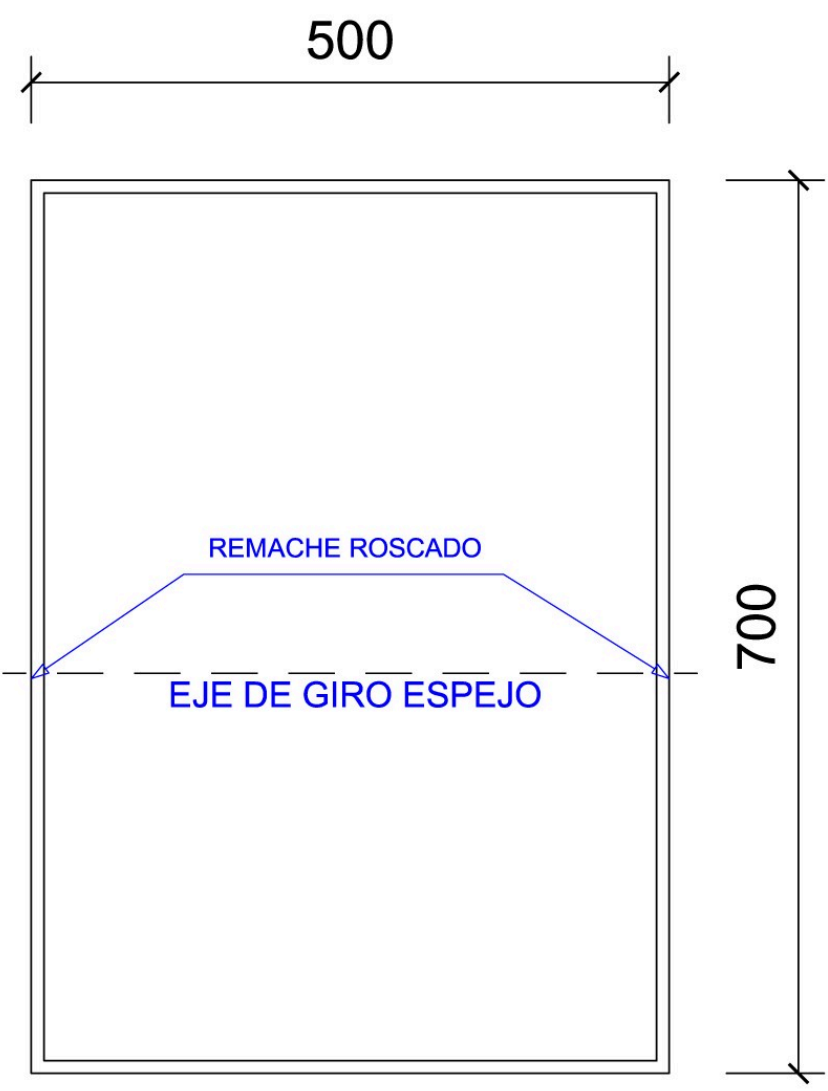
Satin

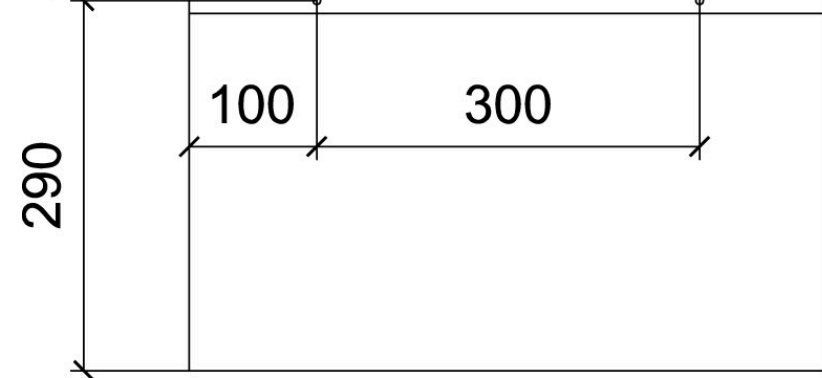
**Dimensions:** 700 height x 500 width x 75 depth (mm)

#### Maintenance

Stainless steel requires maintenance as dirt over time can damage the chromium (Cr) contained in stainless steel. We recommend a monthly cleaning with a specialized product for stainless steel.

#### Dimensional drawing



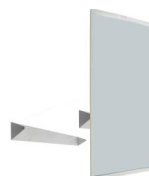


## DETALLE FIJACIÓN PARED



Ctra. Laureà Miró, 385-387  
08980 | Sant Feliu de Llobregat,  
Barcelona - Spain  
T. +34 934 742 423  
F. +34 934 743 548  
nofer@nofer.com  
www.nofer.com

RELATED  
PRODUCTS



08023.B



08023.W



08024.B

These specifications may be modified and/or amended due to manufacturing requirements.