



Justrite Safety Group

548 Diamond Flex™ ESD

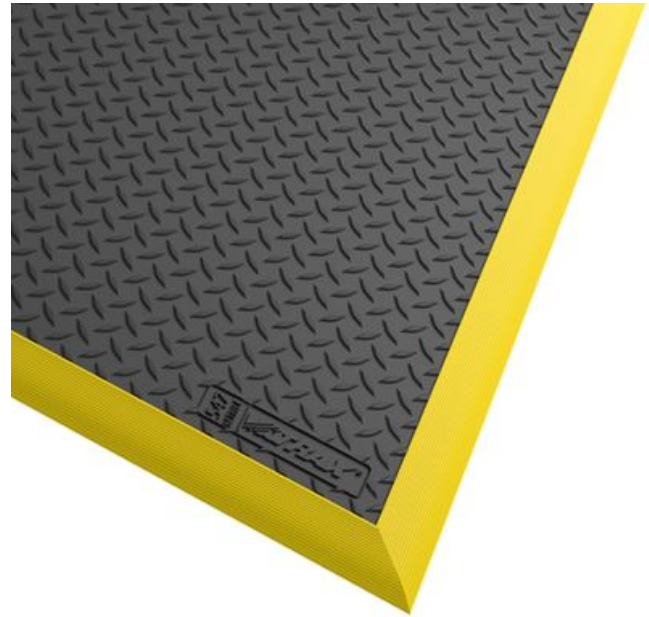
Diamond plate static dissipative workstation mat



548 Diamond Flex™ ESD

Ergonomic, Anti-fatigue & Safety Matting - Dry Areas Standalone Matting

The 18.4 mm thick platform elevates and insulates the worker from the hard ground while the bulleted domes underneath allow the mat to bend and 'flex' with every movement.



- Static dissipative rubber compound
- Standard size mats for individual workstations
- Loose lay and require no installation

- Highly visible yellow safety ramps included on all sides to prevent tripping

- Dry Areas
- For placement in manufacturing plants, assembly lines, picking, packing and logistics warehouses, individual work stations.
- Heavy duty

Recommended use



Ergonomic, Anti-fatigue & Safety Matting - Dry Areas Standalone Matting Diamond Flex™ ESD

General

Brand	Notrax
Category	Dry Areas Standalone Matting
Product Number	548
Product Family	Industrial & Commercial Matting
Product Group	Ergonomic, Anti-fatigue & Safety Matting
Product Name	Diamond Flex™ ESD
Recommended use	For placement in manufacturing plants, assembly lines, picking, packing and logistics warehouses, individual work stations.
Series	Diamond Flex™
Shipping Location	Achterzeedijk 57, Unit 15, Barendrecht 2992SB, The Netherlands
Type	Dry Areas - Heavy Duty Industrial
Update trigger	20210310-1301
Usage Intensity	Heavy duty

Sustainability

REACH	Reach compliant (Registration, Evaluation, Authorization and Restriction of Chemicals).
Recycled	True
Sustainability	Recyclable material
Warranty (years)	1

Tests

ESD Rg	Rg 10 ⁶ - 10 ⁹ Ω
ESD Rp	Rp 10 ⁶ - 10 ⁹ Ω
Fire rating US	Pass
Surface Flammability	Pass

Technical Specifications

Application	Industrial Environments
Edges	Bevelled edges on all sides
Material	Static dissipative natural rubber
Material Group	Rubber
Process	Compression Moulding

Diamond Flex™ ESD Black/Yellow

Art. nr.	Dimension (cm)	Weight (kg)	Thickness (mm)
548S3864BY	97 cm x 163 cm	21.36	18.4
548S4064BY	102cm x 163cm	21.3	18.4

Diamond Flex™ ESD Black

Art. nr.	Dimension (cm)	Weight (kg)	Thickness (mm)
548S3864BL	97 cm x 163 cm	20.3	18.4
548S4064BL	102 cm x 163 cm	21.3	18.4